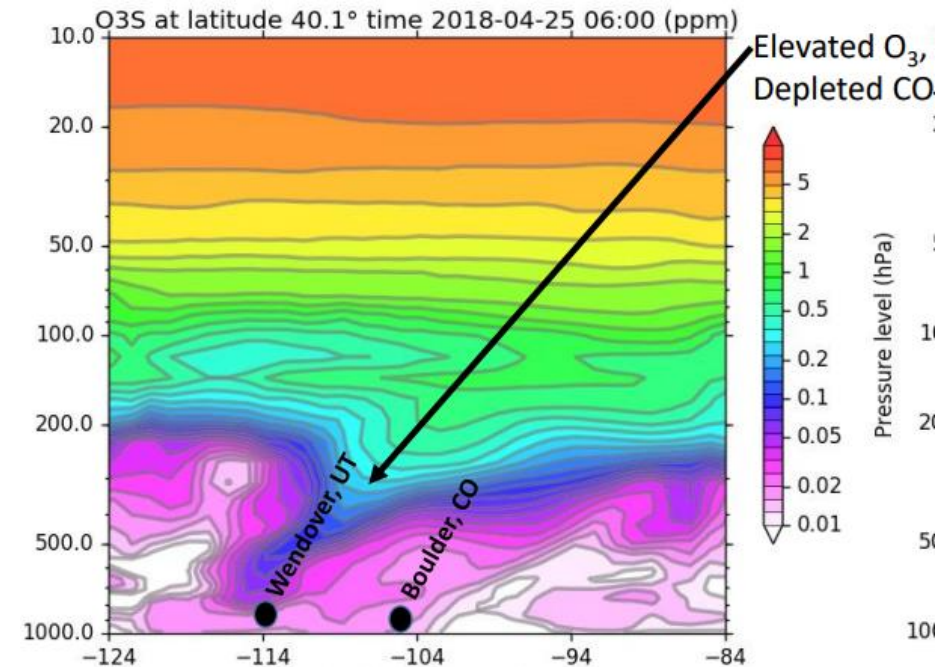
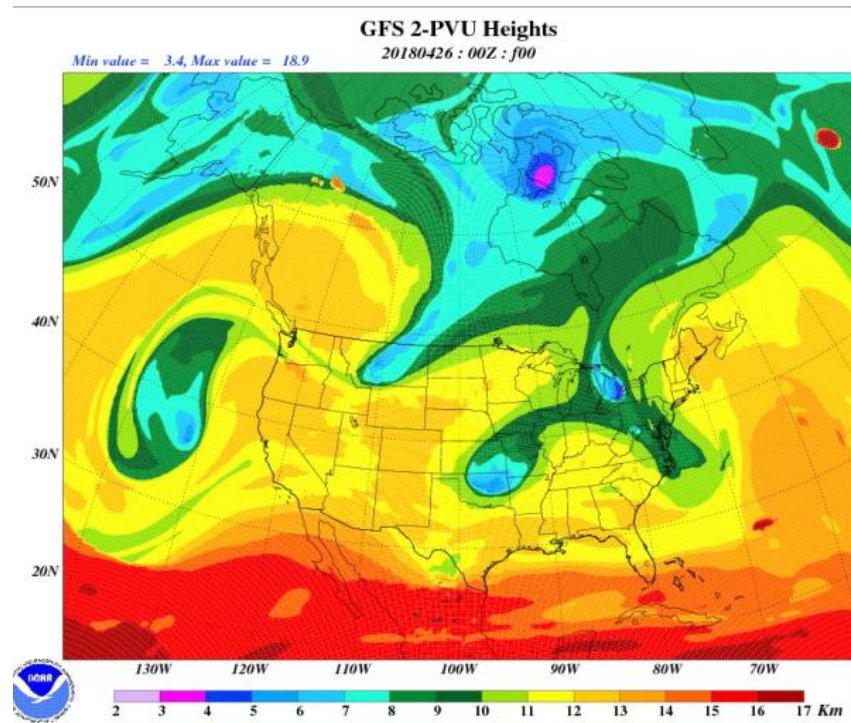


# Stratospheric Ozone Intrusion Guidance



WYOMING DEPARTMENT OF  
ENVIRONMENTAL  
QUALITY



Cara Keslar Wyoming DEQ

April 24, 2019

# Important Points to know about the SOI Guidance

- ◆ Highly technical, will need a meteorologist to perform analyses on meteorological processes of the intrusion and how it reaches the ground.
- ◆ Separated into Tier 1 and Tier 2 demonstrations
  - Tier 1: Used when ozone is typically low and met. patterns are suggestive of transport from stratosphere
  - Tier 2: Used when relationship between the intrusion and ozone is complex and not fully elucidated by Tier 1 demonstration
- ◆ Great details on other analyses to include in a demonstration
- ◆ Instructional powerpoint with resources is available on [EPA's EE website](#)
- ◆ Can rely on EPA's SI workgroup for assistance



WYOMING DEPARTMENT OF  
ENVIRONMENTAL  
QUALITY

# SOI Guidance Timing

- ◆ April 2018: EPA SI workgroup solicited input early on the guidance from participating states.
- ◆ September 2018: Draft for comment to larger groups; WESTAR and some states submit comments
- ◆ November 2018: SI guidance and tools presentation released
- ◆ No Exceptional Event concurrences have been issued under the new guidance



WYOMING DEPARTMENT OF  
ENVIRONMENTAL  
QUALITY

# WESTAR Comments

- ◆ Great cooperative process through SI workgroup made the guidance writing process very efficient!
- ◆ Guidance excellently describes SI's, both conceptually and technically.
- ◆ Urged collaboration with State/Locals and Region to decide on Tier 1 versus Tier 2.
- ◆ Urged EPA to continue to develop/refine the science and policy tools to distinguish between sources of ozone.
- ◆ Urged EPA to continue to fund/advocate for diagnostic tools.

**Key Take-Away:  
The SI workgroup  
works!**

This technically focused resource made the guidance writing process run smoothly and continues to make SI diagnosis more efficient